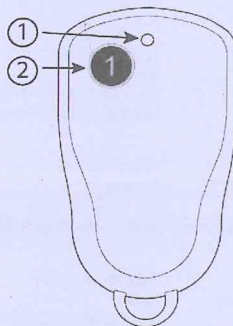


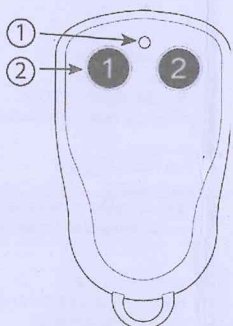
TELE RADIO AB Transmitter instructions

T20TX-0XNKL/ T20TX-0XNKM

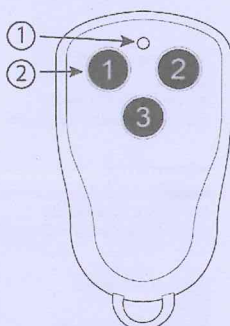
T20TX-01NKL
T20TX-01NKM



T20TX-02NKL
T20TX-02NKM



T20TX-03NKL
T20TX-03NKM



- 1. LED
- 2. Push buttons

TECHNICAL DATA

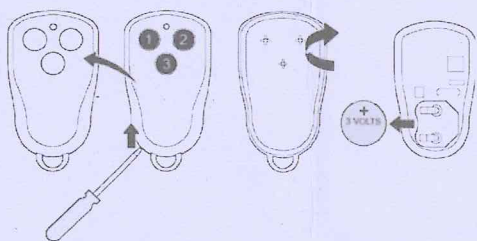
Frequency	L=433.92 MHz, M=869MHz
IP classification	65
Size	71 x 38 x 12 mm
Climatic conditions	-20°C to +55°C
Humidity	10 - 90%

RADIO TRANSMISSION

Transmission continues during the time that each function button is pressed and is interrupted when the button is released. The red LED flashes while the button is pressed.

CHANGE THE BATTERIES

BATTERY TYPE: 3v, cr2032



LEARN THE TRANSMITTER CODE

T20RX-02AKL/T20RX-02AKM

Three different functions for the two relays in the receiver can be selected when instructing the transmitter: button 1 activates relay 1, button 2 activates relay 2, any button on the transmitter activates relay 1, any button on the transmitter activates relay 2.

T20/T60RX-03ADL, T20RX-03ADM

NOTE! If you are using a T20-transmitter, you have to use a fixed individual code. 60 transmitters can be stored in the receiver.

T20: fixed individual code / T60: adjustable code

1. Press the registering button for 0.3 - 4 seconds.
2. Release the button.
When in programming mode, the red LED lights.
3. Press the required function button.
The red LED flashes 3 times quickly.
4. The code is saved.
The red LED flashes once every other second.

T20: not possible / T60: fixed individual code

1. Press the registering button for 0.3 - 4 seconds.
2. Release the button within 1 second.
3. Press the button once again (for more than 1 second).
The red LED goes out and lights up.
4. Press the required function button.
The red LED flashes 3 times quickly.
5. The fixed, individual code for T60 is stored.
The red LED double-flashes every other second.

T60RX-04ASL, T60RX-04BSL, T60RX-04DSL, T60RX-08ASL, T60RX-08BSL, T60RX-08CSL, T60RX-08DSL, T60RX-04ASM, T60RX-04BSM, T60RX-08ASM, T60RX-08BSM

Fixed, individual code

1. Select the program option "Learning of code" (red LED) using the function button.
2. Confirm by using the select button. The red LEDs above the relays light up.
3. Scroll to the relay(s) that you want to program by using the function button.
When a relay has been selected, it will be controlled by the transmitter button that you used during learning.
When a relays are selected: the transmitter's first button will control relay 1, button 2 will control button 2, etc.
4. Confirm by:
 - pressing down the select button for 0.3 - 4 seconds.
 - pressing down the select button within 1 second for at least 1 second.
5. Program the transmitter's code by holding down the transmitter button until the red LED 6 flashes 3 times.

Red LED 6 double flashes to indicate that the transmitter's adjustable and fixed, individual code have been stored.

Adjustable code

Ensure that the required adjustable code is set on the transmitter's code switch.

ERASE THE TRANSMITTER FROM RECEIVER

T20RX-02AKL/T20RX-02AKM

Erase all stored transmitter's ID-codes by pressing the receiver button for more than 8 seconds.

T20/T60RX-03ADL, T20RX-03ADM

Press the receiver function button for approx. 4 seconds. The red receiver LED lights. When the red receiver LED goes out, the transmitter is erased.

T60RX-04ASL, T60RX-04BSL, T60RX-04DSL, T60RX-08ASL, T60RX-08BSL, T60RX-08CSL, T60RX-08DSL, T60RX-04ASM, T60RX-04BSM, T60RX-08ASM, T60RX-08BSM

Press the receiver function button. The red receiver LED lights. Press the select button. The relay LEDs light. Press the function button. Press

TELE RADIO AB Transmitter instructions

the select button. Release. Press the select button again. Keep pressed until the relay LEDs go out.

BATTERY PRECAUTIONS

Observe the following general battery warnings:

- As batteries contains flammable substances such as lithium or other organic solvents, they may cause heating, rupture or ignition.
- Risk of explosion if battery is replaced with a battery of an incorrect type.
- Do not short circuit, disassemble, deform or heat batteries.
- Never try to charge a visibly damaged or frozen battery.
- Keep batteries out of reach of small children. Should a child swallow a battery, consult a physician immediately.
- Avoid direct soldering to batteries.
- When discarding batteries, insulate the + and - terminals of batteries with insulating/masking tape. Do not put multiple batteries in the same plastic bag.
- When improperly disposed, lithium batteries may short circuit, causing them to become hot, burst or ignite.
- Store in a cool location. Keep batteries away from direct sunlight, high temperature, and high humidity.
- Do not throw batteries into fire.

ROHS AND WEEE

In accordance with Directive 2011/65/EU on restriction of the use of certain hazardous substances in electrical and electronic equipment (RoHS) and Directive 2002/96/EC on waste electrical and electronic equipment (WEEE), Tele Radio AB strives to minimize the use of hazardous materials, promotes reuse and recycling, and reduces emissions to air, soil and water. When a commercially viable alternative is available, Tele Radio AB strives to restrict or eliminate substances and materials that pose an environmental, health or safety risk.

GUARANTEE, SERVICE, REPAIRS AND MAINTENANCE

The Tele Radio AB products are covered by a guarantee/warranty against material, construction and manufacturing faults. During the guarantee/warranty period, Tele Radio AB may replace the product or faulty parts. Work under guarantee/warranty must be carried out by Tele Radio AB or by an authorized service centre specified by Tele Radio AB.

This is not covered by the guarantee/ warranty:

- Faults resulting from normal wear and tear
- Parts of a consumable nature
- Products that have been subject to unauthorized modifications
- Faults resulting from incorrect installation and use
- Damp and water damage

Maintenance:

- Repairs and maintenance must be carried out by qualified personnel
- Use spare parts from Tele Radio AB only
- Contact your representative if you require service or other assistance
- Keep the product in a dry, clean place
- Keep contacts and antennas clean
- Wipe off dust using a slightly damp, clean cloth

IMPORTANT! Never use cleaning solutions or high-pressure water.

www.tele-radio.com

TELE RADIO AB
Sweden, Main office
Tel. +46 (0)31-748 54 60
email: info@tele-radio.com

TELE RADIO SVERIGE
Sweden
Tel. +46 (0)31-724 98 00
email: sverige@tele-radio.com

TELE RADIO LTD
England
Tel. +44 (0) 1625 509125
email: england@tele-radio.com

TELE RADIO TURKEY
Turkey
Tel. +90 216 574 22 94
email: turkiye@tele-radio.com

TELE RADIO ASIA
China
Tel. +86-(0)592-3111168
email: china@tele-radio.com

TELE RADIO GmbH
Germany
Tel. +49 (0)94 51-944 8 550
email: deutschland@tele-radio.com

TELE RADIO LLC
North America & Latin America
Tel. +1 (305) 459 0763
email: america@tele-radio.com

TELE RADIO BV
Benelux
Tel. +31-(0)70-419 41 20
email: benelux@tele-radio.com

TELE RADIO AS
Norway
Tel. +47-6933 4900
email: norge@tele-radio.com

TELE RADIO ITALY
Italy
Tel. +39-(0) 175 21 19 62
email: italia@tele-radio.com